

Open your eyes
to the possibilities.



Time for your next move

What's your next move when planning to invest in a new wheel loader? Do you use a bishop to sound out the terrain and your options? Or do you sit back and rely on your big, safe rooks, and count on everything being as it should? Even though they're stationary half the time?

Why not grab that quick-footed knight and bet on a 45-degree turn to quickly dominate the board? Make the most of that unique breakout angle to quickly free yourself for a renewed attack! Enjoy superior balance and control of the battlefield before making your triumphant move.

If you want to be winner, you need to plan more than just a few moves ahead. You can't simply go by colour. And you have to know what you're willing to sacrifice.

Not least when it comes to choosing a wheel loader.

SUPERIOR PERFORMANCE



Thank you, Rune!

**Never underestimate a true innovator and entrepreneur.
They see things others don't.
They do things others don't – or can't.**

Rune Andersson embodies this ideal of intangible qualities. How, for example, did he once come up with an ingenious way to build counterbalance forklifts in the early 1960s? And how comes he was the one who had the insight that right up until the 1980s, wheel loaders were hulking monsters that weren't really right for the job, and that there was a great need for innovation?

Going up against mighty giants in a capital-intensive market is no easy task, but somehow, back in 1983, Rune successfully devised a unique technical concept that quickly turned out to be a serious alternative for many construction companies, farmers, excavating companies, forestry companies and independent contractors.

You know what we mean. Ljungby Maskin.

But it doesn't really end there

Rune has always worked doggedly, following his conviction that you're entitled to something more than what the industry generally offers. This means that wheel loaders from Ljungby Maskin are continually refined to remain at the forefront. Moreover, several independent tests have shown Ljungby machines to be the best. The key is that Rune has always had one foot in the design department and the other at our customers – you.

Close to hand, full control and understanding

This is the essence of Ljungby Maskin. It's not just by chance that we've gathered our entire development and production teams under the same roof. In Ljungby. In Småland. In Sweden.

Admittedly, this bucks the traditional trend in the big, wide world. But in our case, it benefits customers as our wheel loader concept development and design are planted firmly in the real world. This makes it easy to develop, trial, test and implement improvements. It also makes it easier to listen a little more carefully to what customers would like to see, as we know that our flexibility enables us to deliver on those wishes. There are no long, fruitless dialogues here.



Rune Andersson, innovator, entrepreneur and owner of Ljungby Maskin AB.

Your biggest yet smallest partner

That's easy for us to say, you reason. Well yes, our customers "only" buy about 200 fully fledged wheel loaders from Ljungby Maskin each year. But that's also part of the whole idea. We shouldn't be bigger than we need to be to remain the best, but despite this we're the biggest when it comes to wheel loaders.

That's what specialisation is all about.

What's more, we're now big enough that everything no longer comes down to Rune. With a dedicated and highly capable team, Ljungby Maskin is fully equipped for the future.





GRAVEL



INDUSTRY



TIMBER



INFRASTRUCTURE



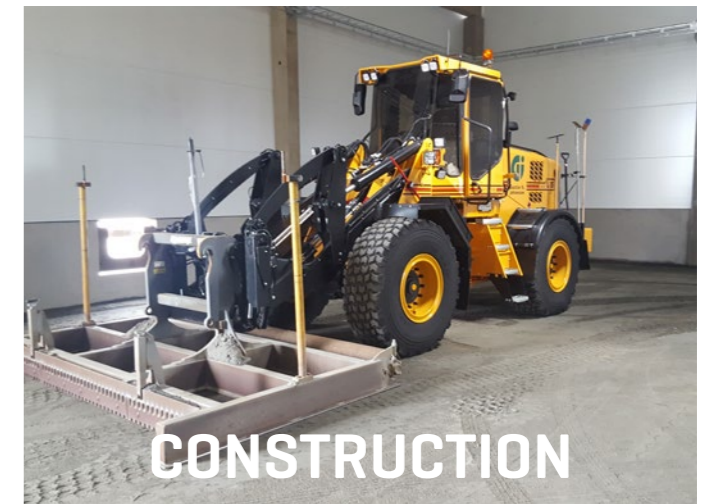
AGRICULTURE



TERMINALS



CONTRACTING



CONSTRUCTION

The industry leader

Speak the customer's language

The fact is, there's more to this expression than meets the eye. In our case, we could speak the customer's language from the start and many smaller contractors understood us immediately. Since then, Ljungby Maskin has earned itself a broader customer base and today our machines are found in most industries.

Optimise for your industry

In today's bizspeak, it's all about understanding and being able to create value for you, the customer. That means understanding what your industry faces in terms of requirements, needs and work methods, as well as enabling

you to make the most of your investment. And always with an underlying focus on life-cycle cost and sustainability:

- lowest operating cost
- highest availability
- right output and uptime
- optimum customisation
- productive and ergonomic operator environment

The right machine in the right place is a given

Added to this is the machine's flexibility as regards the different attachments to be used. What's more, we offer the flexibility to add any necessary equipment and functionality and to optimise the machine to your particular needs.

Inhouse attachment manufacturing

We have good insight into which attachments and customisations are suited to different tasks. We manufacture a large range of attachments to ensure a uniquely long service life – conventional buckets, planing buckets, swivel mounts and timber grapples up to 4 m², with or without hydraulic extenders.

For demanding environments

If you handle active products such as salt, fertiliser, pellets, battery acid or the like, we have both the experience and the technical means to improve operational reliability and extend machine life in such demanding environments.

Full flexibility

Naturally, we can also help to complement your Ljungby with attachments from other suppliers, such as pallet forks, refuse handling equipment, crane arms, brushcutters, snow blowers, timber grapples and more. Never doubt that we can tailor a machine for your particular industry.

Our nuclear family

All Ljungby wheel loader models share a common genetic code. Optimised performance, customisation to meet your specific needs, and high availability throughout their life cycle.

As a wheel loader specialist, we have to outdo any other manufacturer with a broader offering. It's a matter of our survival. What's more, doing good things that create value for our customers is deeply rooted in our psyche.

In fact, most of the 4000 machines we delivered between 1983 and 2019 are still in operation. Many machines are used for 3-5 shifts and we have customers who've clocked

up more than 60,000 hours with a single machine, without having to replace vulnerable parts such as pins and axle bearings.

Surely we should be a little proud of this fact?

Quality integrated with product development

That you can rely so heavily on a Ljungby is down to our basic philosophy wherein product development, production, improvement work and customer demands are gathered together under the same roof. These ingredients are reduced to a very tasty stew that simply gets better and better.

As standard, our machines are designed to cope with a long service life and heavy workloads. It all comes down to

smart technical solutions and generously sized components. Our continual development efforts are thoroughly grounded, quickly responding to input from operators, production managers, service managers and others and analysing whether there's anything we can refine even more. A customer order for a very specific function may well become a standard feature a few years later.

We build to order

It's become common knowledge that Ljungby Maskin builds to order. All production is initiated by customer orders and most Ljungby machines are in fact customised with

additional equipment or special functions. Naturally, though, should you need a standard machine without any added extras we can help with that too.

With the exception of the powertrain, which is sourced from leading specialist suppliers, we manufacture essentially every component at our production facility in Ljungby. This gives us exceptionally good control over the entire production chain, on site, in our factory, while also offering unprecedented flexibility. Organising production in this manner also results in any number of sustainability gains, such as no unnecessary transportation, for example.

Once your machine is fully assembled, it enters the test phase in which we ensure it'll meet your high expectations.



L9-L11

Strong and flexible service machines equipped for their intended tasks within agriculture and contracting or as flexible service machines.

Specification	L9	L11
Kerb weight, tonnes	9.5-10.5	10.9-11.5
Tipping load 0° kg	6,500	8,100
Breakout force Standard bucket kN	95	95
Max. engine power kW (hp)	151-157 [205-213]	151-157 [205-213]
Max. torque (Nm)	945	945
Lifting height mm	3,985	4,070
Transmission	ZF Ergopower WG160	ZF Ergopower WG160
Front axle	ZF MTL 3075	ZF MTL 3075
Rear axle	ZF MTL 3075	ZF MTL 3075
Timber grapple (m²)	1.6	1.6
Tyre size	17.5R25	20.5R25



L18-L20

Our two sturdy wheel loaders for slightly more demanding tasks in a gravel pit or for handling timber. Machines with extra muscle and comfort.

Specification	L18	L20
Kerb weight, tonnes	17.2-19.0	19.8-22.0
Tipping load 0° kg	13,900	16,100
Breakout force Standard bucket kN	170	180
Max. engine power kW (hp)	220 [300]	220 [300]
Max. torque (Nm)	1,200	1,200
Lifting height mm	4,265	4,320
Transmission	ZF Ergopower WG210	ZF Ergopower WG210
Front axle	ZF MTL 3085	ZF MTL 3105
Rear axle	ZF MTL 3085	ZF MTL 3095
Timber grapple (m²)	2.6	2.9
Tyre size	23.5R25	23.5R25



L13-L15

Our test winners are sturdy workhorses for demanding contracting work and industrial service. Extraordinary power and functionality.

Specification	L13	L15
Kerb weight, tonnes	12.8-13.6	14.5-16.0
Tipping load 0° kg	9,300	10,900
Breakout force Standard bucket kN	110	120
Max. engine power kW (hp)	157-220 [213-300]	157-220 [213-300]
Max. torque (Nm)	1,200	1,200
Lifting height mm	4,180	4,180
Transmission	ZF Ergopower WG210	ZF Ergopower WG210
Front axle	ZF MTL 3085	ZF MTL 3085
Rear axle	ZF MTL 3085	ZF MTL 3085
Timber grapple (m²)	1.6	2.0
Tyre size	20.5R25	20.5R25



L25-L30

When you need all the extras at a timber yard, industrial plant or gravel pit. A machine that performs all the better the tougher the job.

Specification	L25	L30
Kerb weight, tonnes	25.5-28.5	30.0-32.0
Tipping load 0° kg	21,500	24,000
Breakout force Standard bucket kN	230	250
Max. engine power kW (hp)	294 [400]	294 [400]
Max. torque (Nm)	2,110	2,110
Lifting height mm	4,630	4,700
Transmission	ZF Ergopower 5WG310	ZF Ergopower 5WG310
Front axle	MT-L 3115-II	MT-L 3115-II
Rear axle	MT-L 3125-II	MT-L 3125-II
Timber grapple (m²)	3.6	4.0
Tyre size	26.5R25	29.5R25

Performance warning

It's a great feeling, climbing into a Ljungby, settling in behind the controls and starting it up. You can immediately tell that this is no plaything. With so many unique features and smart solutions combined with a solidly built powertrain, we almost feel compelled to issue a performance warning. It can get addictive...

Frame

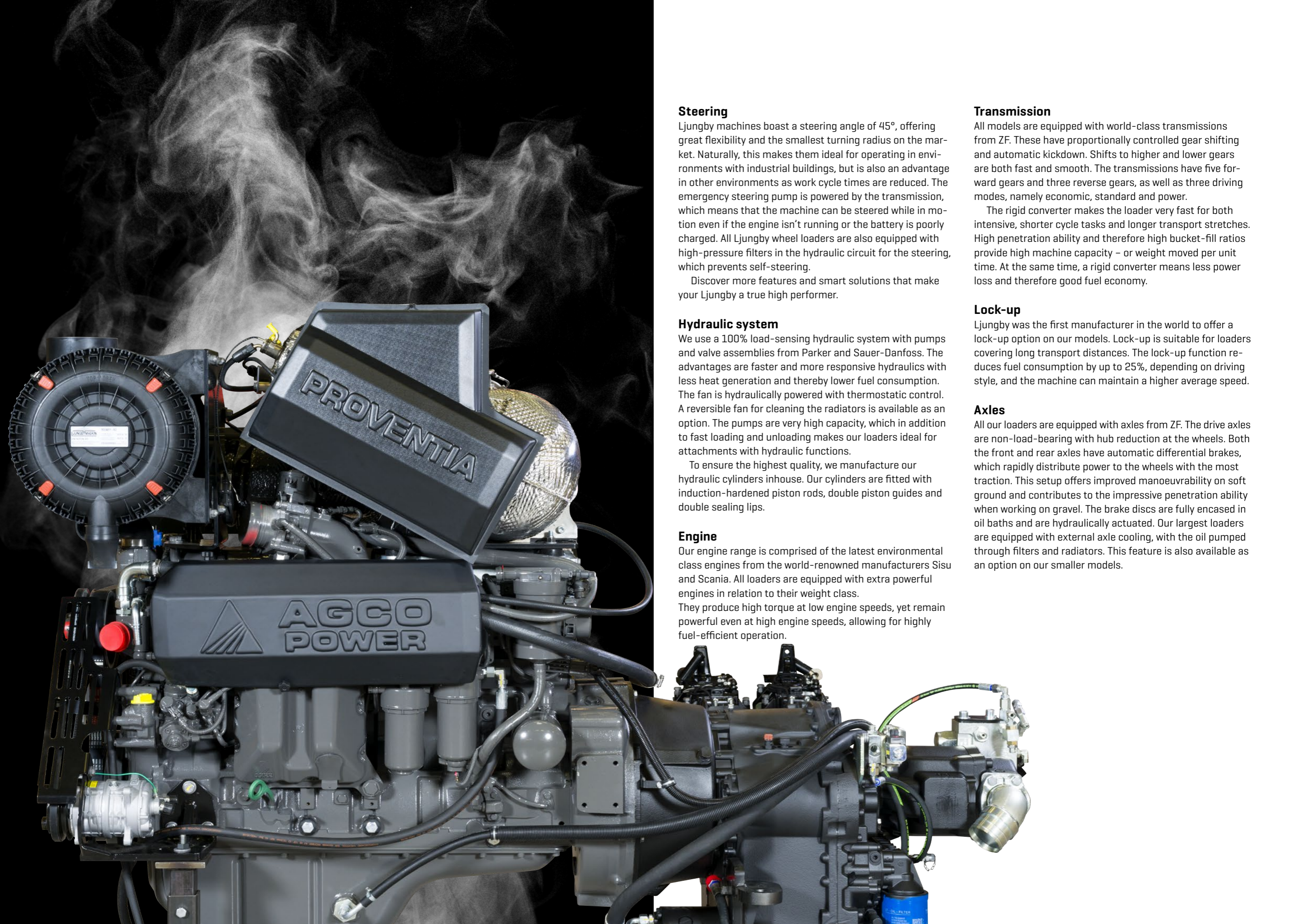
Ljungby chassis feature widely spaced bearing mounts on the articulated joint. The front frame's box-like construction protects the lifting cylinders and makes it incredibly resistant to torsion. The rear frame resembles a truck frame. Like the front frame, it's made of heavy-duty Weldox structural steel. This makes it sturdy and resistant to torsion while also offering the necessary flexibility to avoid cracks. The axle bearings are made of hardened steel in a design that uses expander bolts for both the articulated joint bearings and the steering cylinder mounts.

Loader arm

The loader arm has a unique narrow mask profile based on two side-mounted cylinders. All forces and loads are efficiently distributed and transmitted across the front drive wheels. This is a tried-and-tested approach using carefully selected materials for a construction that combines low weight and high tipping load capacity. The design also ensures good machine stability and impressive breakout forces.

The bucket can be tilted forwards 105° for planing and for effectively excavating or getting unstuck. The tilt is powerful even at full forward tilt, making Ljungby machines ideal for handling timber with a grapple. Certain models are available with 100% parallel operation when using forks, as well as loader arm geometry well suited to timber handling.





Steering

Ljungby machines boast a steering angle of 45°, offering great flexibility and the smallest turning radius on the market. Naturally, this makes them ideal for operating in environments with industrial buildings, but is also an advantage in other environments as work cycle times are reduced. The emergency steering pump is powered by the transmission, which means that the machine can be steered while in motion even if the engine isn't running or the battery is poorly charged. All Ljungby wheel loaders are also equipped with high-pressure filters in the hydraulic circuit for the steering, which prevents self-steering.

Discover more features and smart solutions that make your Ljungby a true high performer.

Hydraulic system

We use a 100% load-sensing hydraulic system with pumps and valve assemblies from Parker and Sauer-Danfoss. The advantages are faster and more responsive hydraulics with less heat generation and thereby lower fuel consumption. The fan is hydraulically powered with thermostatic control. A reversible fan for cleaning the radiators is available as an option. The pumps are very high capacity, which in addition to fast loading and unloading makes our loaders ideal for attachments with hydraulic functions.

To ensure the highest quality, we manufacture our hydraulic cylinders inhouse. Our cylinders are fitted with induction-hardened piston rods, double piston guides and double sealing lips.

Engine

Our engine range is comprised of the latest environmental class engines from the world-renowned manufacturers Sisu and Scania. All loaders are equipped with extra powerful engines in relation to their weight class.

They produce high torque at low engine speeds, yet remain powerful even at high engine speeds, allowing for highly fuel-efficient operation.

Transmission

All models are equipped with world-class transmissions from ZF. These have proportionally controlled gear shifting and automatic kickdown. Shifts to higher and lower gears are both fast and smooth. The transmissions have five forward gears and three reverse gears, as well as three driving modes, namely economic, standard and power.

The rigid converter makes the loader very fast for both intensive, shorter cycle tasks and longer transport stretches. High penetration ability and therefore high bucket-fill ratios provide high machine capacity – or weight moved per unit time. At the same time, a rigid converter means less power loss and therefore good fuel economy.

Lock-up

Ljungby was the first manufacturer in the world to offer a lock-up option on our models. Lock-up is suitable for loaders covering long transport distances. The lock-up function reduces fuel consumption by up to 25%, depending on driving style, and the machine can maintain a higher average speed.

Axles

All our loaders are equipped with axles from ZF. The drive axles are non-load-bearing with hub reduction at the wheels. Both the front and rear axles have automatic differential brakes, which rapidly distribute power to the wheels with the most traction. This setup offers improved manoeuvrability on soft ground and contributes to the impressive penetration ability when working on gravel. The brake discs are fully encased in oil baths and are hydraulically actuated. Our largest loaders are equipped with external axle cooling, with the oil pumped through filters and radiators. This feature is also available as an option on our smaller models.



Five highlights

45-degree steering angle

Ljungby machines boast a steering angle of 45°, offering great flexibility and the smallest turning radius on the market. This is invaluable for work in confined spaces. Naturally, this optimises all types of operation as a wheel loader often has to get the job done both quickly and efficiently. The emergency steering pump is powered by the transmission, which means that the machine can be steered while in motion even if the engine isn't running or the battery is poorly charged.

Unique narrow mask profile

The unique loader arm design with two side-mounted lifting cylinders offers the operator unobstructed forward, upward and side views. This ensures superior control over the machine's various attachments and the surrounding area.

Offensive breakout angle

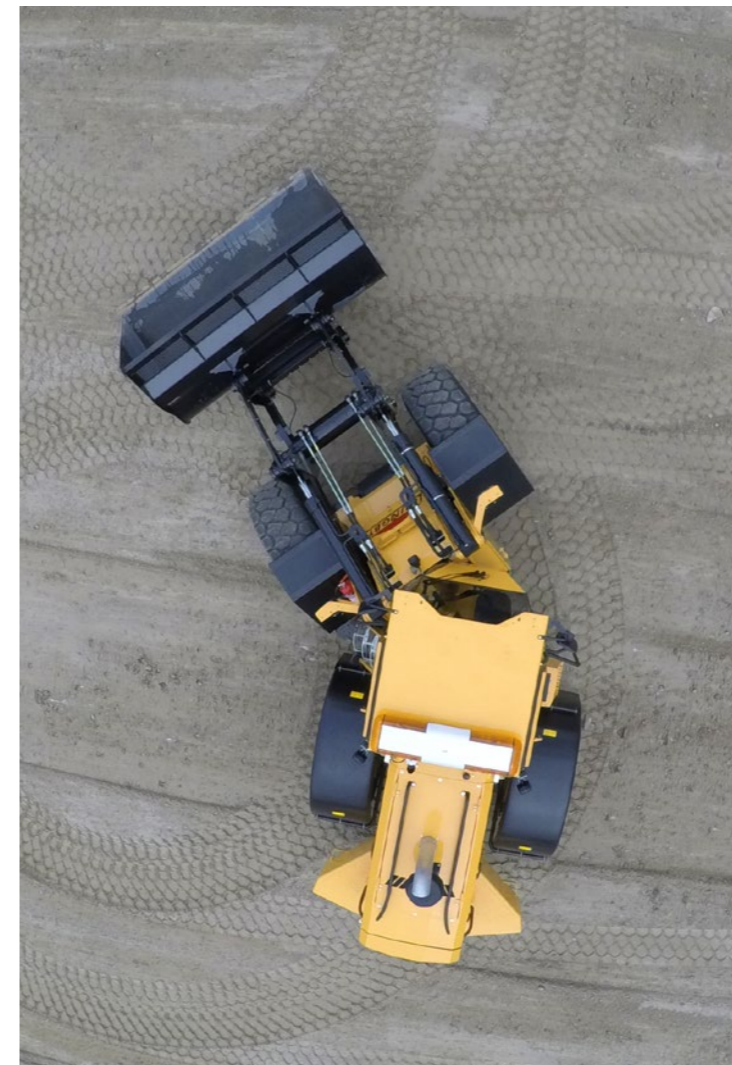
The bucket can be tilted forward up to 105° for planing, excavating or getting unstuck. The tilt is powerful even at full forward tilt, making Ljungby machines ideal for handling timber with a grapple.

Safe and effective cab steps

Sturdy cab steps are the alpha and omega of occupational safety. Missteps are easily made when things are busy at work, right? Our machines have inclined cab steps that are highly visible and quickly and easily ascended or descended.

The best visibility

Over the years, Ljungby has received accolades for the best visibility in several independent tests. A well-considered and well-balanced cab in terms of size and design has resulted in both optimum visibility and a favourable work environment.



The little extras

One of the many advantages of a wheel loader is the flexibility. And this is especially true of Ljungby machines. Equipping a standard machine with various optional extras, such as a three-point linkage, flexible tow bars, hydraulic outlets and more, makes it much more valuable. It makes your investment more profitable – and creates business opportunities or greater uptime. Which we all like.

Three-point linkage

A three-point linkage makes your Ljungby even more flexible. It enables you to use all attachments that connect to a three-point linkage, such as sand spreaders and cultivators. Ljungby offers three-point linkages from HE-VA, which are thoroughly tried-and-tested.

You can complement your three-point linkage with hydraulic outlets for hydraulic top links and any other hydraulic functions you need. The three-point linkage is often complemented with an electrical connector for any lighting on the attachment. The three-point linkage can be controlled from the cab or the rear of the machine.

Height-adjustable tow bar

Ljungby's height-adjustable tow bar for connecting a trailer brings even more flexibility to your daily routine. You can easily connect different types of trailer. Our custom-designed tow bar is cast in a special mould to better withstand any twisting between machine and trailer. All height-adjustable tow bars are inspected and can pull a 25-tonne load and withstand a 3-tonne vertical load. The entire kit is easily rotated 90 degrees when not in use to increase ground clearance. The kit includes all hydraulics necessary to raise and lower the tow bar. The hydraulics for any attachments must be added according to needs.

A standard kit comprises:

- Hydraulic brake outlet
 - Hydraulic outlets for trailer functions, such as tip and flap.
- A number of options are available
- Camera on tow bar to simplify trailer attachment

- Electrical outlet, 12 V or 24 V
- Tow bar lighting
- 80 mm tow ball

Rear hydraulic outlets

You can choose from a large number of combinations of and functions for the hydraulic outlets on a Ljungby. Everything from a T connector with a selector at the rear to an electrically controlled valve with adjustable flow. If you need large hydraulic flows at the rear of the machine, we offer options with flows of up to 280 l/min. Drainage valves are not standard on rear outlets and must be added separately. This also applies to float position. Also specify the type of coupling you would like for the outlets.

VBG drawbar

If you equip your Ljungby with a VBG drawbar, you can pull truck trailers or tippers with the same functionality as when hauling them with a truck. Most useful when working in contracting or agriculture. The rear frame of your Ljungby is customised during production to enable a VBG drawbar to be connected.

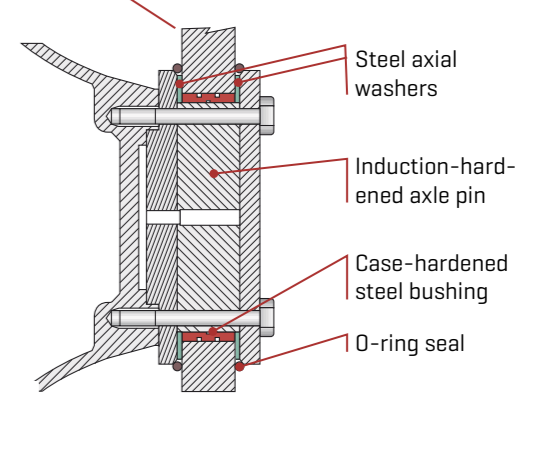
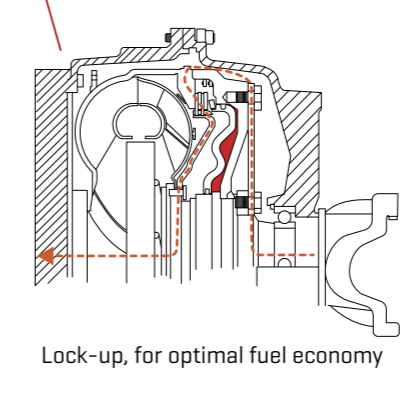
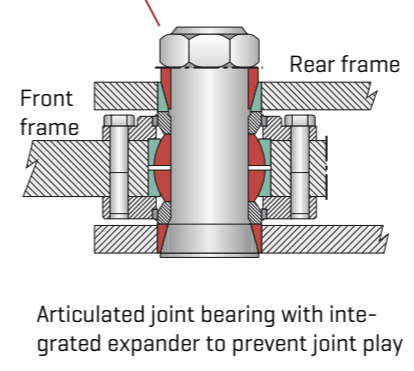
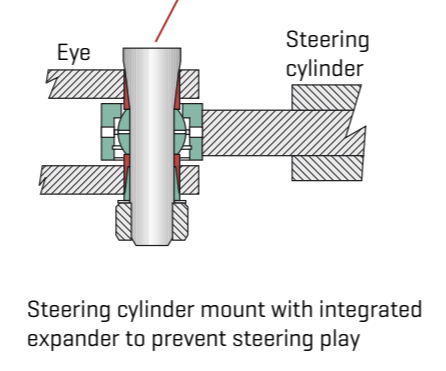
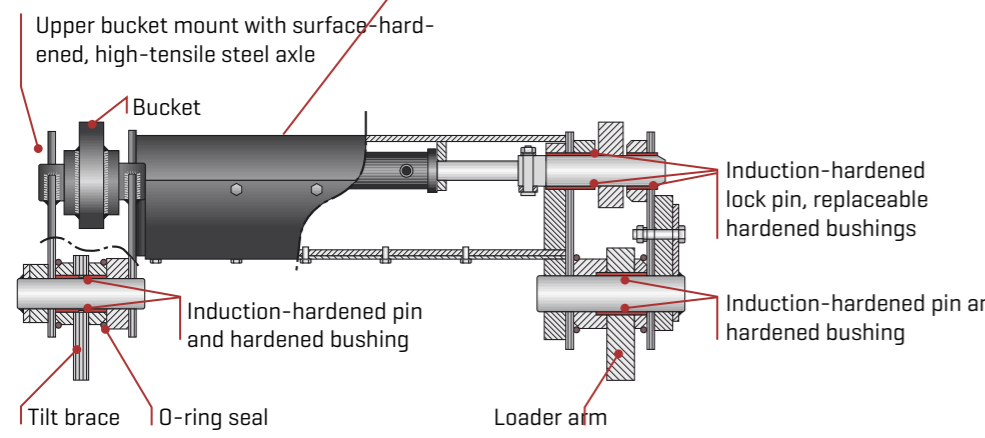
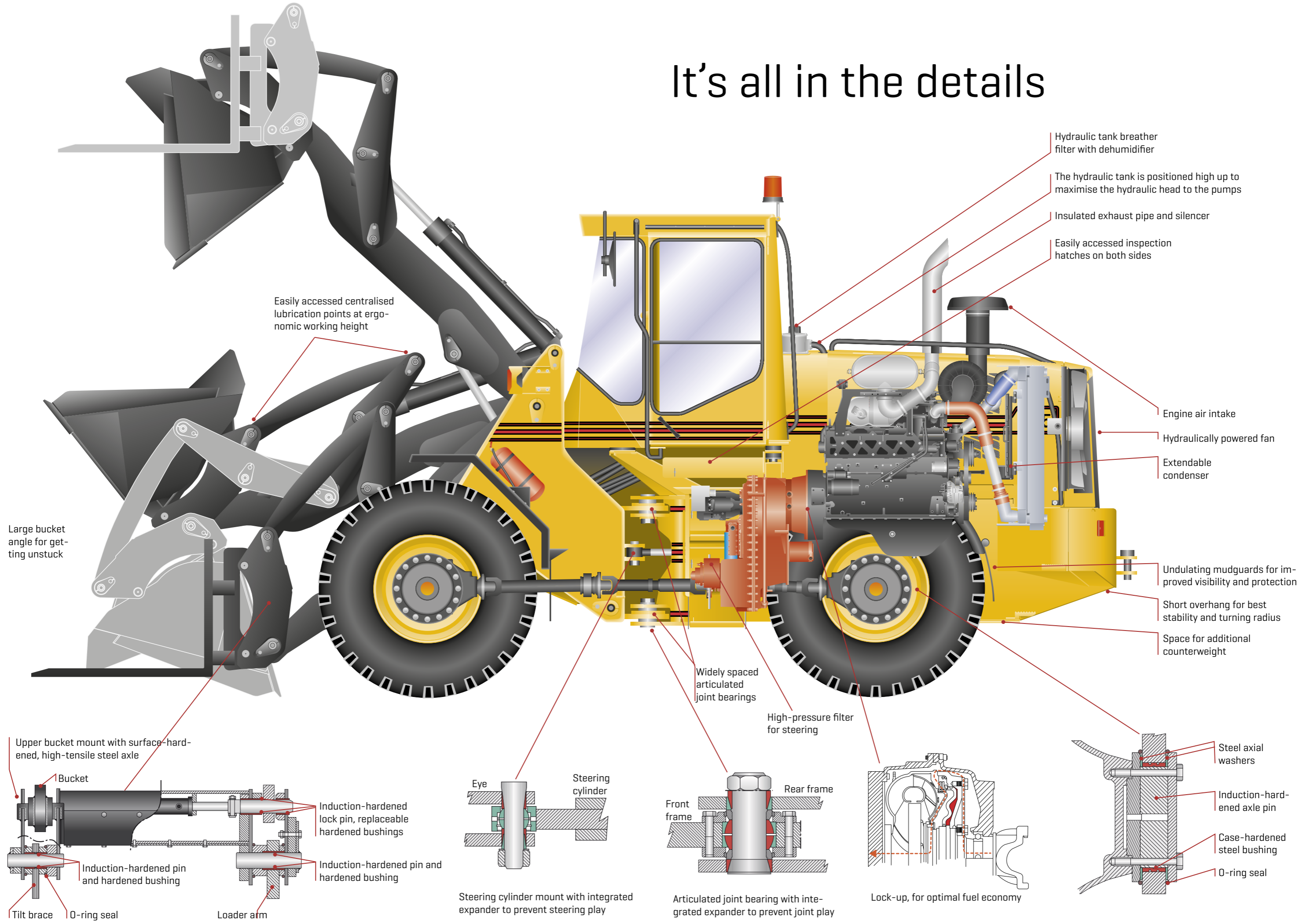
You can choose from many optional accessories that enable you to control your trailer:

- Outlet, air brakes
- Duomatic
- Outlet, hydraulic brakes, 160 bar
- VBG electrical outlet
- Electrical outlet 12 V or 24 V
- Hydraulic tipper functions

We have plenty of other good examples of ways to equip your Ljungby.



It's all in the details



Your comfort zone

Probably the best operator environment in the industry

That is, safe, comfortable, ergonomic, productive and packed with unique features appreciated by those who do the work – the operators. But also appreciated by the owners, as a productive and motivated operator does a better job, works more sustainably, causes less wear and tear on the machine and suffers fewer occupational injuries.

Several independent tests have shown that Ljungby machines offer the best visibility. Countless operators have said that this is the best work environment they've ever had. The machine combines the greatest productivity with top-notch comfort. It boasts numerous standard features devised by our designers and myriad options to make the working day a pleasure rather than a pain.

Unique visibility

Visibility is optimised, in part thanks to our unique narrow mast profile, but mostly thanks to the cab's dimensions, panoramic windows and concealed door frames combined with the machine's minimal overhang.

Top-notch comfort

Comfort is optimised by effective noise and vibration damping, the cab climate, individual operator settings, ample space and ergonomic cab steps. And why not add our Comfort System, which both absorbs and dampens vibrations and tilts the cab to match individual preferences and needs? Moreover, you can always tailor your machine with additional functions and accessories that make day-to-day tasks that little bit easier and more convenient.

Welcome to your new comfort zone.



Visibility diagram 1



The loader arm's narrow mask profile offers a superior view of your attachments and the surrounding area.



Unique flexible cab suspension absorbs most jolts and vibrations.



The door closer ensures high operator comfort and no unnecessary twisting motions for the operator.



Electrically adjustable pedals for ergonomic driving posture and minimal calf and foot strain.



Hydraulic cab tilt for a better view during high lifts.



The sturdy, low cab steps are the most operator-friendly on the market.



The panoramic cab offers extreme visibility and is well insulated with optimised cab airflows and climate.



Operator's seat from Be-Ge to match requirements and expectations for an ergonomically optimised work environment.



Lever steering with buttons for kickdown, intermittent windscreen wiper, indicators and forward/reverse.

Life-cycle gains

Your Ljungby is built with careful consideration for the many varied requirements and needs of different industries. Sometimes we're overly generous in our dimensioning, but we're pretty sure that this benefits us both. We maintain a constant dialogue with our customers and users and mull things over before committing.

That's why we've given a great deal of thought to your operating costs, environmental impact, service access, maintenance, quality and economic service life.

These are, of course, givens, but it's the balance between input and results that's of interest.

Everyone's talking about sustainability

We'd rather talk about what isn't sustainable. For instance, driving long distances without a lock-up function, which reduces fuel consumption by up to 25 percent, is unsustainable. Each time a machine needs repairing because of undersized components or quality defects in the design is unsustainable. Each hour a machine stands still and doesn't deliver is unsustainable. You may even be forced to lease a replacement machine now and then. All of these factors can easily negate the favourable cost estimate made when making an investment decision.

Everyone's talking about life-cycle cost

We'd rather talk about the size of your life-cycle gains. Every minimised or eliminated cost over the machine's service life can actually be considered a pure gain instead. If you also consider the machine's availability and efficiency [productivity], which generate production value or direct income, it can actually be quite enjoyable reading.

And why not add the estimated resale value when making your RoI calculation?

It's all too easy to focus on the machine's acquisition cost, even though so much else comes into the equation.



Low operating costs

- Low maintenance costs thanks to generally high product quality
- Engine characteristics that ensure fuel-efficient operation
- Effective engine air intake system for high efficiency and low fuel consumption
- Optimum weight distribution for high capacity and lower fuel consumption
- Transmission characteristics that ensure limited power losses and good fuel economy
- Lock-up function for lower fuel consumption
- Highly temperature-efficient hydraulic system for lower fuel consumption
- Short cables between battery and engine for lower energy losses

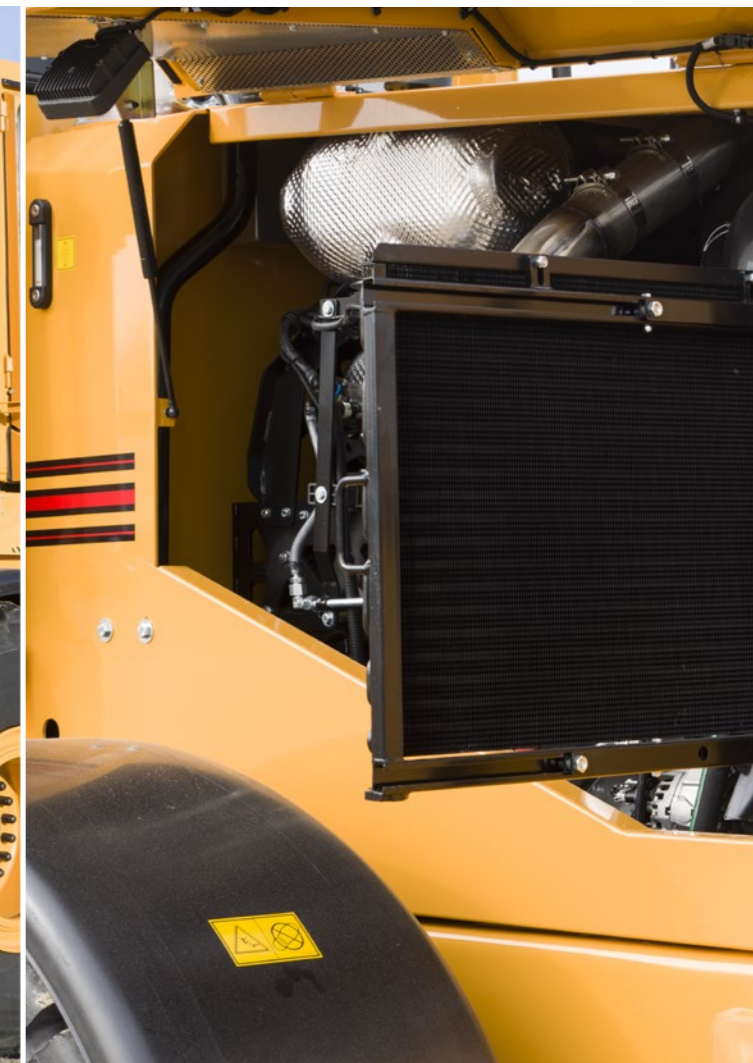
Simple service and maintenance

- Ljungby Machine Control (LMC) offers high-level control and overviews as well as rapid troubleshooting
- Radiator system = easy access for inspections and service

- Gas-spring-mounted service hatches for easy and convenient engine and filter access
- Battery installation on a smart slider for easy access
- Hydraulic system components gathered under hatches for quick access
- Permanently mounted oil pump for quick and easy engine oil changes
- Swivel radiator grille for easy access to radiator and hydraulic radiator fan
- Simple daily maintenance for the operator

Environmental focus

- Machines designed for low fuel consumption during both handling and driving
- Built for productive handling with high output
- All production under the same roof ensures control of all activities that impact the environment
- Fulfils all current environmental requirements
- Cooperates proactively with environmental agencies
- Ergonomic and productive workplace for operators for a good work environment



SUPERIOR
PERFORMANCE

Checkmate!

You won. The battle is over

Or, as we usually say, checkmate.
You figured that long-term sustainability and performance are more profitable for your business than the lowest current list price.
You figured that a specially trained fighter completes the task better than a jack of all trades.
And you figured that a wheel loader, built by Europe's most specialised manufacturer, also delivers accordingly.

Thank you for choosing a Ljungby

You won't be disappointed.
And we guarantee that you'll dominate the playing field.





The industry leader

Ljungby Maskin AB designs, develops, manufactures, customises, sells and services its world-class Ljungby wheel loaders.

Ljungby machines are distributed by subsidiaries and selected dealers.

This brochure offers inspiration for a more informed investment decision. As regards standard and optional equipment in texts and images, you are referred to our technical specification sheets and direct contact with our sales representatives.



SUPERIOR PERFORMANCE

LJUNGBY MASKIN AB, BOX 314, SE-341 26 LJUNGBY, SWEDEN · TEL: +46 372 252 00
info@ljungbymaskin.se · www.ljungbymaskin.se

We cannot be responsible for typographic errors